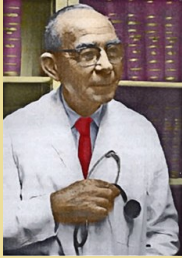


Tinsley Randolph. Harrison, M.D.
1900 -1978



SSCI Officers

Tonette Krousel-Wood, MD, MPH
President

Monica Farley, MD
President-Elect

Gailen Marshall, Jr., MD, PhD
Secretary-Treasurer

SSCI Executive Director

Joan G. Kemp
UAB Comprehensive Cancer Ctr.
1824 Sixth Avenue South
WTI 205
Birmingham, AL 35294-3300
Tel: 205-934-5077
joankemp@uab.edu

**The American Journal of the
Medical Sciences**

David W. Ploth, MD - Editor
Kathleen Kelly, Managing Editor

In This Issue Page

2015 Southern Regional Meeting Recap, Meeting Highlights, New Members	2-3
Young Investigator Awards, Committee Reports	4-6
SRM 2016	7
SRM 2016: Presidential & Joint Plenary Symposium Speakers	8
2016 Founders' Medal Recipient, Workshops & Karl T. Weber Lectureship Speaker	9
2016 Career Development Speakers/Topics, Visiting Professor Program	10
Mentor of the Year Award Requirements/ Nomination Information	11
AJMS Update	12



**SSCI Newsletter
July 2015**



~ ~ ~ MESSAGE FROM THE PRESIDENT ~ ~ ~

Dear Colleagues and Friends,

In 2016, we will celebrate 70 years since the founding of the SSCI by Dr. Tinsley Harrison, the first President of the Society. I am honored and humbled to serve as 70th President of SSCI during this milestone year. Since 1946, SSCI has been dedicated to the advancement of medical research and has fostered the next generation of investigators through sponsorship of the annual scientific *Southern Regional Meeting* and publication of our scientific journal, *The American Journal of Medical Sciences*. Over the last 7 decades, the SSCI has hosted 68 outstanding scientific sessions, supported thousands of junior colleagues, advanced science through the publication of over 7,700 articles in *The AJMS* and experienced strategic growth to nearly 500 accomplished members! Our 2016 meeting will remember our rich history, celebrate our achievements and highlight advances in translational research.

The SSCI recognizes the key roles of our students, fellows, and junior faculty for the future of medical research and the importance of medical educators in preparing our future clinicians and scientists for the interface between medicine and research. To that end, our Society is committed to supporting scientific excellence, expanding opportunities for mentoring, fostering the academic careers of our junior colleagues, and engaging our medical educators. SSCI needs you, the members of the Society, to be successful in our endeavors and remain a vibrant organization in the face of current challenges in academic medicine. There are several key areas for participation: nomination of new members, faculty, mentor and trainee attendance at the SRM meetings, manuscript submissions to *The American Journal of Medical Sciences*, participation in the Visiting Professor Program, and donations to the *Fund for Academic Medicine*. We welcome your involvement in any and all of these endeavors.

With approximately 500 members, the SSCI continues as one of the premier multispecialty organizations, devoted to fostering research and education.

Tonette Krousel-Wood, MD, MPH

**Call For Abstracts for 2016 Southern Regional Meeting
(February 18—20, 2016)**

For more information about the
Call for Abstracts and SSCI Nephrology Young Investigators' Forum
visit the SSCI website: www.ssciweb.org

****Abstract Deadline is October 9th****

Please encourage your colleagues and trainees to submit their work
and attend our exciting and stimulating scientific
sessions and workshops.

Abstracts being presented at the 2016 Southern Regional Meeting will be printed
in January's issue of *Journal of Investigative Medicine*.

RECAP OF THE 2015 SOUTHERN REGIONAL MEETING

The Southern Regional Meeting endures as *the* regional meeting for mentoring the next generation of clinical and translational scientists. From February 26th to the 28th, the Southern Regional Meeting (jointly hosted by SSCI, SAFMR, SSPR, APA, and the ASN) attracted approximately 625 attendees (~375 trainees/students) and 540 abstracts from over 60 institutions in 26 states, the District of Columbia, and Puerto Rico. Many thanks go to everyone who worked to make this year's meeting a success. The Program Planning Committee was chaired by Dr. Daniel Villarreal, the 2014 President of the SSCI. In keeping with our mission, SSCI presented 3 SSCI Young Investigator Awards, one SSCI Young Investigator Award in General Internal Medicine, 19 SSCI Nephrology Young Investigator Forum Awards, 7 SSCI Cardiovascular Case Report Scholar Awards, and 4 Cardiovascular Young Clinician Scientists Awards. In collaboration with the Southern Section of the AFMR, 8 Junior Faculty, 41 Trainee, and 32 Student Travel Awards were presented. The combined investment in these awards totaled \$72,000, with approximately \$52,000 of that amount paid by SSCI. There was a sustained focus on mentoring during the poster presentations, and 3 posters received SSCI Poster Awards. The critical importance of supporting the next generation of medical investigators was evident during the Chairs' breakfast when Chairs from across the region introduced promising trainees that represent the future of our profession. In the upcoming year, SSCI will continue to capitalize on the talents of its members to expand on mentoring in support of the next generation of clinical and scientific leaders.

One of the major highlights of our meeting is the presentation of the Founders' Medal Award, which was created in honor of Dr. Tinsley Harrison. This year's Founder's Medal Award was presented to Dr. Monica Farley from Emory University. Monica's dedication and contributions to SSCI have been unwavering for many years, and the recognition is richly deserved. We count on current and future members to continue this level of dedication to further the mission of SSCI.

The Tinsley Harrison Award recognizes the best original manuscript published in the *American Journal of the Medical Sciences* in 2014. This year's award was presented to Stephanie DeLoach from Thomas Jefferson University for her work entitled "*Obesity Associated Inflammation in African American Adolescents*".

To recognize the importance and contributions of mentors, the inaugural *Mentor of the Year Awards* were presented this year. Outstanding mentors were recognized in 3 categories: Student mentoring - Dr. John Mountz at the University of Alabama at Birmingham, Postgraduate mentoring - Dr. Gailen Marshall, Jr. at the University of Mississippi Medical Center, and Junior faculty mentoring - Dr. Michael Hart at Emory University.

The inaugural *Epidemiology and Population Health Club* with invited speaker Dr. Paul Whelton offered new insights regarding practical application of clinical trials and observational studies to over 60 attendees.

The combined societies succeeded in bridging adult and pediatric medicine by presenting a Joint Plenary entitled "***From Childhood to Adulthood: Perspectives on Cardiovascular Disease in Females***". This session explored hypertension and health behaviors in females across the lifespan in addition to the promises, problems and unresolved issues regarding hormones and the heart. The SSCI Presidential Symposium entitled "***New Perspectives on Pathophysiology and Management in Heart Failure***" provided key insights on novel activators of cardiovascular disease as well as mechanisms of cachexia in chronic disease states. The concurrent and plenary sessions once again displayed a broad range of talent and interests.

If you did not attend SRM 2015, we encourage you to join your colleagues and bring your trainees to SRM 2016, which will be held February 18-20 at the InterContinental New Orleans.

The inaugural [Karl T. Weber](#) Distinguished Lecture in Cardiovascular Medicine was added to the already successful Cardiology sessions at the Southern Regional Meeting.

Its *goal* is in keeping with the SSCI mission: to disseminate incremental knowledge.

Its *objectives*: to have an invited senior clinician scientist, accomplished in their field and an established opinion leader, deliver a state-of-the-art lecture in cardiovascular medicine on during the Cardiovascular Club Session of the annual SSCI meeting.

The inaugural Lecture was delivered by [Dr. Louis Dell'Italia](#), Professor of Medicine, University of Alabama at Birmingham. The title of his lecture: "*The Multiple Mechanistic Faces of Cardiac Volume Overload.*"



Karl Weber

Lou Dell'Italia

2014 NEW MEMBERS

Evan J. Anderson, MD Emory University School of Medicine	Ildiko Lingvay, MD, MPH, MSCS University of Texas Southwestern Medical Center
Michael E. Brier, PhD University of Louisville	Joshua H. Lipschutz, MD Medical University of South Carolina
Robert L. Carhart, Jr., MD SUNY Upstate Medical Center	Steven G. Lloyd, MD, PhD University of Alabama at Birmingham
Sushma K. Cribbs, MD Emory University School of Medicine	Franck Mauvais-Jarvis, MD, PhD Tulane University Health Sciences Center
Stacy S. Drury, MD, PhD Tulane University Health Sciences Center	Ashiah J. Mehta, MD* Emory University School of Medicine
Timothy P. Endy, MD, MPH SUNY Upstate Medical Center	Jessica S. Merlin, MD, MBA University of Alabama at Birmingham
Rakesh Gopinathannair, MD University of Louisville	Jonathan P. Moorman, MD, PhD East Tennessee State University
Himanhshu Gupta, MD University of Alabama at Birmingham	Christina A. Muzny, MD University of Alabama at Birmingham
Colin W. Howden, MD University of Tennessee Health Science Ctr.	Darin E. Olson, MD, PhD Emory University School of Medicine
Mary Beth Humphrey, MD, PhD University of Oklahoma Health Sciences Ctr.	Puneet Puri, MBBS, MD Virginia Commonwealth University
Devapiran Jaishankar, MD East Tennessee State University	Mary K. Rhee, MD Emory University School of Medicine
Jean I. Keddissi, MD University of Oklahoma Health Sciences Ctr.	Isabel Scarinci, PhD University of Alabama at Birmingham
Satish Kenchaiah, MD, MPH University of Arkansas for Medical Sciences	Leonardo Seoane, MD Ochsner Clinic Foundation
Koyamangalath Krishnan, MD East Tennessee State University	Katherine P. Theall, PhD Tulane University Health Sciences Center
Steven J. Lavine, MD East Tennessee State University	Eric L. Wallace, MD University of Alabama at Birmingham
Carrie G. Lenneman, MD, MSCI University of Louisville	Jeffrey G. Wong, MD University of Pennsylvania
Zihai Li, MD, PhD Medical University of South Carolina	

*Associate member

MEMBERSHIP NOMINATION DEADLINE IS SEPTEMBER 15TH

Information regarding this process can be found on our website: www.ssciweb.org.
The society encourages you to nominate successful and qualified members from your institution or other academic centers. A thriving membership is fundamental to sustain our scholarly objectives.

SSCI YOUNG INVESTIGATOR AWARDS

The SSCI Young Investigator Awards are offered to recognize and encourage excellence in investigation by physicians and medical students during research training.

Eligibility: Medical students, combined MD/PhD students, interns, residents and post-doctoral physicians who are in research training or were in research training June 2015 are eligible. Post-doctoral research training may be considered to extend for a period of up to 3 years and time spent in strictly clinical fellowships need not count against this. The applicant must be

the 1st author of the abstract submitted in competition for the award and will plan to present the paper during the scientific sessions of the Southern Regional Meetings. Please note that it is not necessary for the senior author to be a member of the SSCI.

Procedure: Abstracts will be submitted for the 2016 Annual Meeting of the Southern Society for Clinical Investigation according to the usual procedure described in the instructions on awards consideration accompanying the abstract form.

Deadline: The submission deadline of the abstracts and application for the SSCI Young Investigator Award is **October 9, 2015.**

****Please note that nomination letters from the senior investigator or mentor and the Division Director or Department Chairman are required and should include a statement of the candidate's role in the study. In order to be eligible for consideration of these awards, the nomination letter(s) should be uploaded on the website at the time of abstract submission.**

SSCI COMMITTEE UPDATE

Membership Committee

Committee Chair, Jesse Roman
University of Louisville

The membership of the SSCI has remained relatively stable throughout the past few years. The SSCI is proud to house some of the most talented academicians in the region and recognizes that our members represent the core of this organization. It is for this reason that the Membership Committee continues to look for ways to attract candidates for membership. This year, the committee updated the criteria for membership. It also reduced the number of dates for membership nominations to one time per year in order to allow division chiefs, chairs, and other nominators to focus their energy on this process. Finally, the committee hopes to engage members at each of the Southern academic centers to serve as liaisons for the SSCI and attract new members to the organization. To provide recommendations or to participate in the activities mentioned above, please contact the committee chair at j.roman@louisville.edu.

Mentoring Committee

Committee Chair: Dan Villarreal
Upstate Medical University, Syracuse, NY

We are pleased to report that once again this year, the mentored oral and poster sessions as well as the young investigator and poster award competitions were very successful and well received by trainees and mentors. In depth and lively interactions and discussions included sound research advice and guidance on career development for the young clinician-investigators. As an additional measure of the SSCI's commitment to education, the Mentor of the Year Award Program was inaugurated this year to recognize outstanding teachers and counselors.

As in the past, we would like to express our gratitude to all students, trainees, and mentors for their dedication and contributions, which made the SSCI scientific sessions a brilliant success.

Please forward your comments/suggestions to the committee chair at villarrd@upstate.edu.

SSCI COMMITTEE UPDATE

Publications Committee

Committee Chair: M. "Tonette" Krousel-Wood
Tulane University

Co-Chair: Michael McPhaul
Quest Diagnostics

Over the last year, the committee has worked closely with the editorial team for *The American Journal of the Medical Sciences* to establish a partnership with a new publisher, Elsevier. We are looking forward to this new collaboration and are actively seeking high quality review articles, original research papers, and symposia issues for publication. The 70th Anniversary of the SSCI, coupled with the theme of the 2016 conference, *Translational Research: From Molecules to Mankind and Beyond*, offer a terrific opportunity for submissions to the *Journal*. As always, suggestions for expanding and improving publications to enhance our membership engagement are welcome. Dr. Michael McPhaul is serving as co-chair of the committee and brings a wealth of expertise regarding journal publications.

The Publications Committee actively seeks nominations from the membership to assist with increasing the value and visibility of SSCI publications. Please forward nominations and other comments to Drs. Michael McPhaul michael.j.mcphaul@questdiagnostics.com or Tonette Krousel-Wood at mawood@tulane.edu.

Website Committee

Committee Chair: Vin Tangpricha
Emory University

The committee is pleased to report that the SSCI website is undergoing a major redesign. The new site (right) will be more dynamic and user-friendly. Information on upcoming events, member renewal, Southern Regional Meeting information along with photos and videos, Visiting Professor's Program, as well as the *AJMS* will be featured more prominently. There will also be an education corner where members can view past lectures on career development and research presentations.

The website will also host a **HeLP** Line (**H**ealth **L**egislation and **P**olicy), hosted by [Dr. Jack Feussner](#) from the Medical University of South Carolina. Membership can seek more information about their concerns or information needs in the healthcare legislative/policy arenas pertaining to patient care, education, and research. To begin, the **HeLP** Line site will be informational only. Depending on the membership's interest and engagement, activities could evolve to a policy/legislative blog with information exchange with an opportunity for comment and dialogue.



We welcome your input. Kindly forward your suggestions to the committee chair at vin.tangpricha@emory.edu.

The SSCI would like broaden the participation of the membership in leadership. Members are invited and encouraged to apply to be members of the Standing Committees of the SSCI. The committees primarily meet by conference call, generally 1- 4 times year. If you are interested, please submit a letter of interest and your CV to Joan Kemp.

Committees include: Finance * Mentoring * Membership * Publications * SRM Program * Website

Don't sit on the sidelines. Be someone who wants and CAN make a difference in the Society!

SSCI COMMITTEE UPDATE

Fundraising Committee

Committee Chair, Jesse Roman
University of Louisville

While finances of the SSCI are strong the SSCI is committed to expand its mission in order to enhance academic internal medicine through faculty development, research and education. Resources, however, are needed to extend our footprint in these areas further. Recognizing the potential impact that philanthropy can play in these efforts, the SSCI established a Fundraising Committee to develop a fundraising strategy. After careful evaluation and considering the potential for this endeavor to enhance our programs, the committee established initiatives that would enhance fundraising within and outside of our organization. An analysis of the organization's potential for fundraising was done and a plan developed. Initiatives included the identification of potential donors, the development of documents defining our goals, and the preparation of activities designed to foster this endeavor. The program started in November 2013 and has already shown promise.

To emphasize the importance of this initiative, the SSCI established the **Fund for Academic Medicine** which has now grown to over \$75,000 in gifts and pledges since the beginning of the year thanks to the generous support of many. Our goal is to use these resources to:

- ◆ Sustain support for the travel awards.
- ◆ Maintain the quality of the meeting despite the loss of corporate underwriting.
- ◆ Provide the annual meeting "all year round" by being able to record and distribute presentations, etc.
- ◆ Upgrade our website and its educational offerings.

Below is a list of our generous member supporters thus far this year. Unrestricted gifts today have ranged between annual, cash gifts of \$50 to \$10,000. Gifts restricted to support a particular area of medicine, lectureship, scholarship or travel award have ranged from \$1 to \$25,000 either annually or over a period of up to 5 years.

Each and every one of these gifts is important, makes a difference, and ensures our continued ability and commitment to serve our mission to promote the highest levels of scientific medical inquiry, and to nurture the next generation of clinician scientists. For more information or to make a gift, please contact Joan Kemp at joankemp@uab.edu.

***The SSCI is dedicated to keep our mission alive and healthy, for 2016 and beyond,
but we need your support. So, how can you help?***

President Tonette Krousel-Wood, MD, MPH and the Council of the Southern Society for Clinical Investigation (SSCI) gratefully acknowledge the following donors for their leadership gifts and pledges in support of the SSCI Fund for Academic Medicine. The Fund supports travel and other awards in concert with the Society's mission to mentor future generations of medical investigators and to promote careers in academic medicine.

Michael B. Fallon, MD	Mack Land, MD	Genaro Palmieri, MD
Molly Eaton, MD	Carrie Lenneman, MD	Sumanth Prabhu, MD
Monica Farley, MD	Charles Mansbach, MD	William Ratnoff, MD
Stephen Geraci, MD	Gailen Marshall, MD, PhD	Don Rockey, MD
Gary Gilkeson, MD	Michael McPhaul, MD	Jesse Roman, MD
Lynn Goebel, MD	Robert Means, MD	Paul Southern, MD
Elvira Gosmanov, MD	Donald Miller, MD, PhD	Daniel Villarreal, MD
David Guidot, MD	Paul Muntner, PhD, MHS	Karl Weber, MD
Diane Kamen, MD	N. Stan Nahman, MD	Don Wesson, MD
Marie Krousel-Wood, MD, MPH	Jim Oates, MD	C. Mel Wilcox, MD
		Cherry Wongtrakool, MD

SSCI 70th Anniversary Celebration



2016 marks the SSCI's 70th anniversary and we plan to celebrate in style. Next year's meeting will be a bit different from our norm, but we know you'll love what we have planned.

Thursday afternoon's welcoming reception and the evening club dinners have been excluded (but will be back in 2017). **The poster session time has been adjusted to 4-6 pm** so everyone can be done in time to join the evening's festivities.

Our guests will enjoy a spectacular evening at Mardi Gras World. Stroll the Float Den and take in, firsthand, the floats and props that make Mardi Gras World so magical. Our party continues in the [Grand Oaks Mansion Room](#), complete with a lavish dinner buffet, libations and authentic New Orleans jazz music and storytelling by [Michael White](#).

Laissez les bons temps rouler
"Let the good times roll!"

THE 2016 SOUTHERN REGIONAL MEETING

The 70th Annual Meeting will be held February 18-20, 2016 at the InterContinental New Orleans.

Please make plans to attend as we have some special events planned for this meeting. Partners of this joint meeting include the Southern Section of the American Federation for Medical Research, Southern Society for Pediatric Research, Academic Pediatric Association, Southern Society for General Internal Medicine and the American Society of Nutrition.

The joint meeting will begin with subspecialty sessions and workshops, our traditional mentored poster session Thursday afternoon followed by an evening celebrating the 70th anniversary of the SSCI. ****Next year's meeting will NOT host the Thursday evening speaker/dinners.**

HOTEL RESERVATIONS: Those who wish to make

their reservations early, the hotel reservation form is also included in the Call for Abstracts.

Register now at [SRM 2016 Registration link](#).

NOTE: To obtain the special room rate, be sure to use the reservation forms provided by the SSCI. When making your reservation by telephone, you must mention Southern Regional Meetings, or you will not receive the special room rate provided to members by the hotel. *Therefore, please indicate that you are attending the Southern Regional Meetings when making reservations.*

The deadline for hotel reservations at our convention rate and the hold on the room block is January 23, 2016. Register at [InterContinental New Orleans](#).

SRM Meeting & workshop registration: www.cme.tulane.edu.

2016 SSCI Presidential Symposium
“From Molecules to Mankind and Beyond”



Michael S. Lauer, MD
National Heart, Lung, and Blood Institute



Sherita Hill Golden, MD, MHS
Johns Hopkins University School of Medicine



2016 Joint Plenary Symposium
“Molecules to Humans: The Impact of the Microbiome on Obesity and Inflammation”



Andrew Gewirtz, MD
Georgia State University



Phillip I. Tarr, MD
Washington University School of Medicine



Meet the Experts for Breakfast
Friday, February 19
7:00 - 8:00 am

At SRM 2016, a “Meet the Experts for Breakfast” meeting has been planned for trainees and junior faculty.

This new session will feature three experts who will discuss “Choosing the Next Step in Your Career”, “Doing Research in the Modern Age”, and “Getting the Most Out of SRM and Other Academic Meetings”.

Additional details regarding the “experts” will be provided in the meeting announcements. Please encourage your trainees and junior faculty to register and attend. There is no charge to attend this session.

SSGIM will not be joining us at SRM 2016!!!

In order to better serve their membership across a broad region, the Southern Society for General Internal Medicine (SSGIM) has decided to meet in another location on an every other year basis.

Therefore, SSGIM will **not** be at the SRM in 2016. Please take this opportunity to encourage your students and residents who will not be able to attend the SSGIM meeting to submit their abstract to SRM 2016 and encourage their attendance!!



Congratulations to
[Robert T. Means, MD](#)
the SSCI's 2016
Founders' Medal Award recipient!

2016 SRM Workshops

Thursday, February 18th

12—4 pm Manuscript Preparation and Peer-Reviewed Publication. This workshop will address multiple aspects of publication in scientific journals. Course presenter is Dr. Thomas Welch from *The Journal of Pediatrics*.

2:15—4 pm "Moving Your Clinical Case Presentation into a Published Manuscript" In this workshop, aspects related to developing a clinical case presentation into a manuscript awaiting submission and choosing the optimal journal for submission will be discussed. The audience will view and discuss how 2 abstracts selected from the 2016 SRM meeting moved from a presentation to a manuscript.

Friday, February 19th

1—5 pm Career Development for Clinician Educators. Topics covered will include: Making Career Decisions and Career Development Planning; Scholarship for Promotion and Tenure, Choosing Projects: Return on Investment; Mentors and Mentoring Relationships; Performing Educational Research; and Documentation: CVs and Portfolios. This workshop will be a combination of didactic presentations and break-out audience participation. More details about this workshop and its speakers can be found on the next page.

The Cardiovascular Club invites you to the following session:

The Karl T. Weber Distinguished Lecture in Cardiovascular Medicine, will be held Friday, February 19th at 11:00 a.m. Guest speaker is Dr. Ivor Benjamin, Professor of Medicine and Director of Cardiology at the Medical College of Wisconsin.

All are encouraged to attend.



[Ivor J. Benjamin](#)

Have you recently changed institutions? Perhaps your email address or phone number has changed or you've been promoted. If so, please take a quick moment to update your profile online at www.ssciweb.org.

This will help us keep you up-to-date on Society news.

While you're there, why not sign up to be a mentor, update the Classification, Research and Educational Interests fields and upload a recent photo!

Career Development Course

In 2013, SSCI leadership committed to increasing the value of membership and its annual regional meeting to its Educator Membership, acknowledging that most educator-directed sessions at the Southern Regional Meetings had previously been sponsored by partner organizations. To this end, SSCI will repeat a 4-hour Career Development Workshop for Clinician Educators on Friday, February 19, 2016 at the Southern Regional Meetings. This session will present information, guidance, suggestions and resources to maximize professional success for the early-to-mid career clinician educator. Topics will be presented as didactic sessions plus break-out groups using case scenarios to reinforce the processes advised. It will include a broad-based faculty from 5 medical schools. The panel will take questions on specific issues related to career advancement at the end of the workshop. Next year's speakers include:

[Stephen A. Geraci, MD](#) (Session Chair)

Professor

Department of Medicine

Quillen College of Medicine

Topics: Making Career Decisions/Career Development Planning; Choosing Projects

[Gailen D. Marshall, Jr., MD, PhD](#)

Professor, Vice Chair for Research

Department of Medicine

University of Mississippi Medical Center

Topic: Mentors and Mentoring Relationships

[Alix G. Darden, PhD](#)

Research Professor, Director of Faculty Development

Department of Pediatrics

University of Oklahoma

Topic: Performing Educational Research

[Lee Berkowitz, MD](#)

Professor and Vice Chair for Education

Department of Medicine

University of North Carolina, Chapel Hill

Topic: Scholarship for Promotion and Tenure

[Raquel A. Buranosky, MD, MPH](#)

Associate Professor, Associate Residency Director

Department of Medicine

University of Pittsburgh School of Medicine

Topic: Documentation: CV's and Portfolios

SSCI Visiting Professor Program (VPP): The SSCI continues to have an unwavering devotion to its tripartite mission: the advancement of overall knowledge and sharing of incremental knowledge, information and ideas; a commitment to the mentoring of future generations of medical investigators; and fulfillment of its vision.

The VPP's purpose: to sponsor senior members of the Society who would volunteer their time and share their knowledge through a visitation to an academic medical center. The visit is sanctioned by the SSCI through the formal approval of a submitted application by the hosting center. The application would include the agenda and specific objectives of the visit. A Visiting Professor Program Committee of the SSCI Council would make the determination of applicant selection.

Seven visiting professor programs were approved by Council for 2015. which include: [Jesse Roman, MD](#), Professor of Medicine at the University of Louisville as guest speaker at the Medical University of South Carolina; [Dr. Jim Oates](#), Associate Professor of Medicine at the Medical University of South Carolina to speak at Georgia Regents University, [Dr. Michael Hart](#), Professor of Medicine at Emory University to speak at the University of Mississippi, [Dr. Richard McCallum](#), Professor of Medicine at Texas Tech University Health Sciences Center to speak at University of Alabama, Birmingham, [Dr. L. Lee Hamm III, MD](#), Professor of Medicine at Tulane University School of Medicine to speak at Texas Tech University Health Sciences Center, [Dr. Mel Wilcox](#), Professor of Medicine at University of Alabama, Birmingham to speak at University of Arkansas for Medical Sciences and [Dr. Gailen Marshall](#), Professor of Medicine at the University of Mississippi Medical Center to speak at the University of Central Florida.

The 2016 application deadline is December 15th. We greatly encourage you to utilize the valuable resources available to your students/trainees/fellows within the SSCI. For more details about this program and how your institution can enhance its training opportunities, please visit www.ssciweb.org.

SSCI MENTOR OF THE YEAR AWARD

Mentoring is a fundamental determinant of success in the biomedical sciences and is a major mission of the SSCI. These awards recognize outstanding mentors who are members of our organization and who have demonstrated a longstanding commitment to mentoring students, trainees, and/or junior faculty. Moreover, through their positive impact on the mentee's careers, they have advanced medical education and research for the benefit of the community at large.

Awards Criteria

Mentor award nominations will be evaluated based on the positive educational and/or research experiences of the mentors' trainees, including the impact of mentorship on their subsequent professional and personal success. Key roles of a mentor include:

- ⇒ A wise and trusted advisor
- ⇒ Intellectual growth and development
- ⇒ Career and professional guidance
- ⇒ Positive role modeling

Award Categories

- ◆ Student Mentor (includes medical and graduate students)
- ◆ Postgraduate Mentor (includes residents, fellows and other postdoctoral trainees)
- ◆ Junior Faculty Mentor

Eligibility Criteria

Nominees must be SSCI members in good standing.

Nominees may include physicians, scientists, and educators in the various clinical disciplines of the biomedical sciences. Nominees should have a sustained outstanding record of mentoring over time.

Nominators must be a previous or current mentee(s) of the mentor or be a colleague of the nominee with personal knowledge of the nominee's mentoring qualities and excellence.

There must be a primary and secondary nominator providing written nominations and documentations.

Ineligibility Criteria

- Previous recipients of the SSCI's Mentor of the Year Award are not eligible.
- Incomplete applications will not be considered.
- Self nominations will not be accepted.

Nomination Packages

The nomination packages must include:

- a. Primary and secondary nomination letters including nominators' relationship to nominee
- b. Nominee's curriculum vitae
- c. List of former and present mentees with current status/location

Nominating letters should summarize the nominee's impact on mentoring with clear examples of the positive outcomes on students, trainees, and/or junior faculty. If the nominator(s) is a mentee, a narrative of how the mentor influenced his/her career (s) and those of others should be included.

Nominations will be reviewed and scored by the SSCI Mentoring Committee based on the award criteria outlined above.

Nominations should be submitted to Joan Kemp at joankemp@uab.edu no later than **October 31, 2015**.

Notification and Award Presentation

Award recipients will be notified by mid-December. The award presentation ceremony will be held during the SSCI/SRM meeting February 18-20, 2016.

Congratulations to our 2015 Mentor of the Year awardees:

Junior faculty mentoring - Dr. Michael Hart at Emory University (left)
 Student mentoring - Dr. John Mountz at the University of Alabama at Birmingham (center)
 Postgraduate mentoring - Dr. Gailen Marshall, Jr. at the University of Mississippi Medical Center (right)



The *AJMS* is proud to be the Official Journal of the SSCI

Multimedia is not just a thing of the future. The *AJMS*' website will be a state-of-the-art electronic forum that will become the definitive, expanded and multi-function version of the Journal for SSCI members and individual users.

Such innovations include:

- ◆ Collections: authors will have the ability to create their own.
- ◆ Press and news
- ◆ Multimedia (streaming audio & video can be hosted within articles)!
- ◆ Mobile-optimized websites allowing easy reading of the Journal on multiple mobile devices
- ◆ Clinical Search Optimization: filters and offering "Also Read" articles
- ◆ Author, Editor and Reviewer Feedback Programs
- ◆ Improved navigation and exciting new look
- ◆ Social Media Integration: available at the article level, allowing members and readers to share journal content on Facebook and Twitter pages.

Partnering with Elsevier, the largest medical publisher, allows our members and authors maximum exposure to their other journals (Lancet, Mayo Proceedings, American Journal of Medicine).

www.editorialmanager.com/maj

Journal news from David W. Ploth, MD, Editor-in-Chief

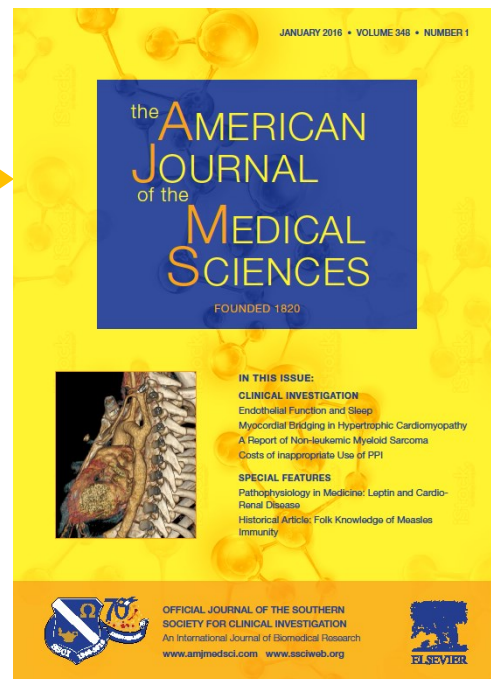
The American Journal of the Medical Sciences recently forged a partnership with a new publisher, Elsevier. The new 5-year contract will take effect January 1, 2016. We anticipate that manuscripts will be able to be submitted online by the end of September, however, these details have not been finalized. We will keep members informed of our progress. We are looking forward to an expanded effort to improve our impact factor and to increase our circulation and exposure.

Two important caveats of the new partnership with Elsevier are ***the dissolution of page charges for SSCI members and waiving of ALL color charges!*** We are looking forward to the transition to a new Editorial software system and the new relationship.

The *AJMS* continues to seek high quality research papers, topical reviews and symposia for publication in the *Journal*. *The Journal* acknowledges the high quality science available within the membership of the Society and asks members to support our efforts to improve the *AJMS* with high quality submissions.

Introducing our brand new look!

Impact
Factor:
1.389



The *AJMS* will be hosted on Elsevier's online platforms: **ScienceDirect** for academic, corporate and government institutions; on **HealthAdvance** for members and individual subscribers and **ClinicalKey** for clinicians in the hospital setting.